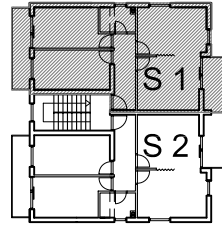
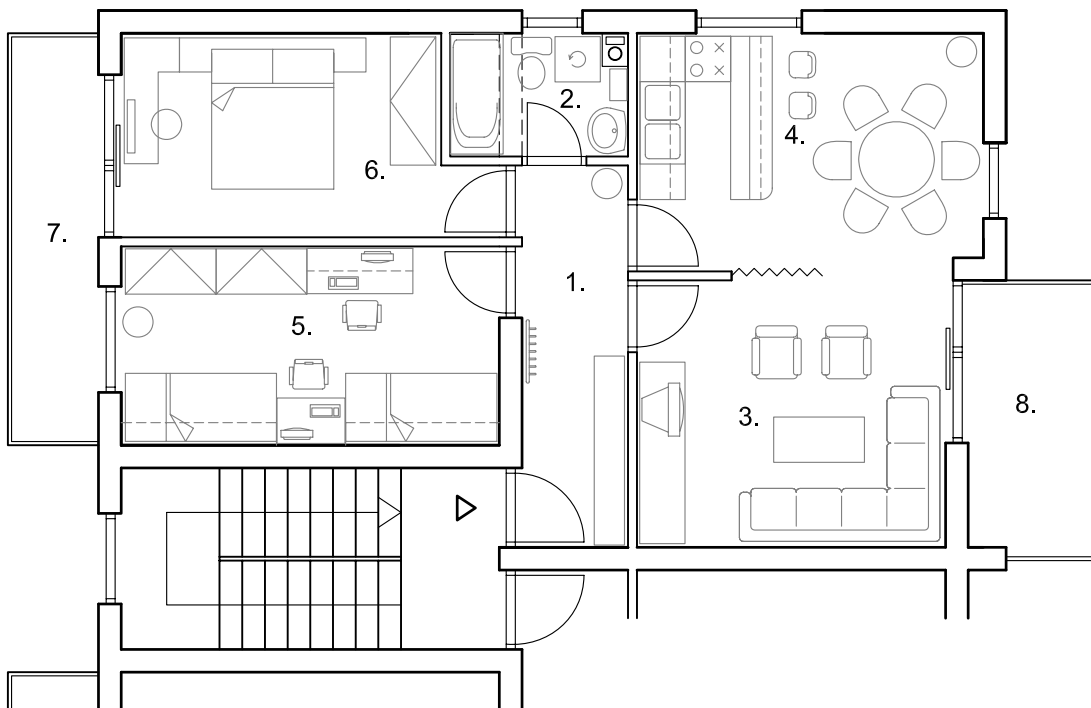


STAMBENO POSLOVNA ZGRADA  
 SP 2 Ul. Dr.Luje Naletelića - BOTINEC

TROSOBNI STAN 77,89 m<sup>2</sup>



DRUGI KAT  
 STAN 1  
 S 1



STAN 1

koeficijent

1. HODNIK	parket	7,07 m <sup>2</sup>
2. KUPAONICA	ker. pločice	3,72 m <sup>2</sup>
3. D. BORAVAK	parket	14,73 m <sup>2</sup>
4. KUHINJA	ker. pločice	14,34 m <sup>2</sup>
5. SOBA	parket	13,15 m <sup>2</sup>
6. SOBA	parket	12,15 m <sup>2</sup>

65,16 m<sup>2</sup>      1,0

7. BALKON	ker. pločice	6,55 m <sup>2</sup>	0,5
8. BALKON	ker. pločice	6,18 m <sup>2</sup>	0,5

STAN 1      netto      77,89 m<sup>2</sup>