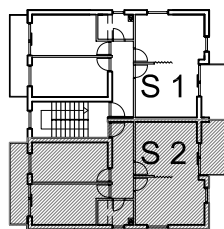


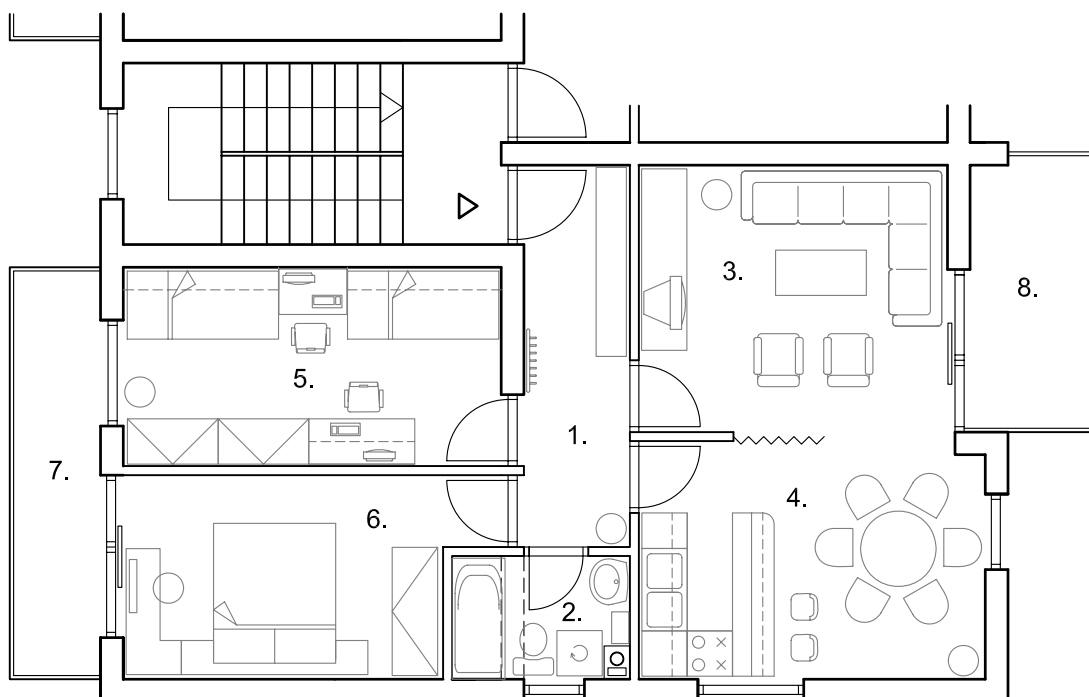
STAMBENO POSLOVNA ZGRADA
 SP 2 Ul. Dr.Luje Naletelića - BOTINEC

TROSOBNI STAN 77,89 m²



DRUGI KAT
 STAN 2

S 2



STAN 2

koeficijent

1. HODNIK	parket	7,07 m ²	
2. KUPAONICA	ker. pločice	3,72 m ²	
3. D. BORAVAK	parket	14,73 m ²	
4. KUHINJA	ker. pločice	14,34 m ²	
5. SOBA	parket	13,15 m ²	
6. SOBA	parket	12,15 m ²	
		65,16 m ²	1,0
7. BALKON	ker. pločice	6,55 m ²	0,5
8. BALKON	ker. pločice	6,18 m ²	0,5
STAN 2	netto	77,89 m ²	