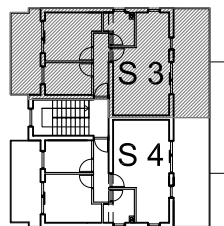


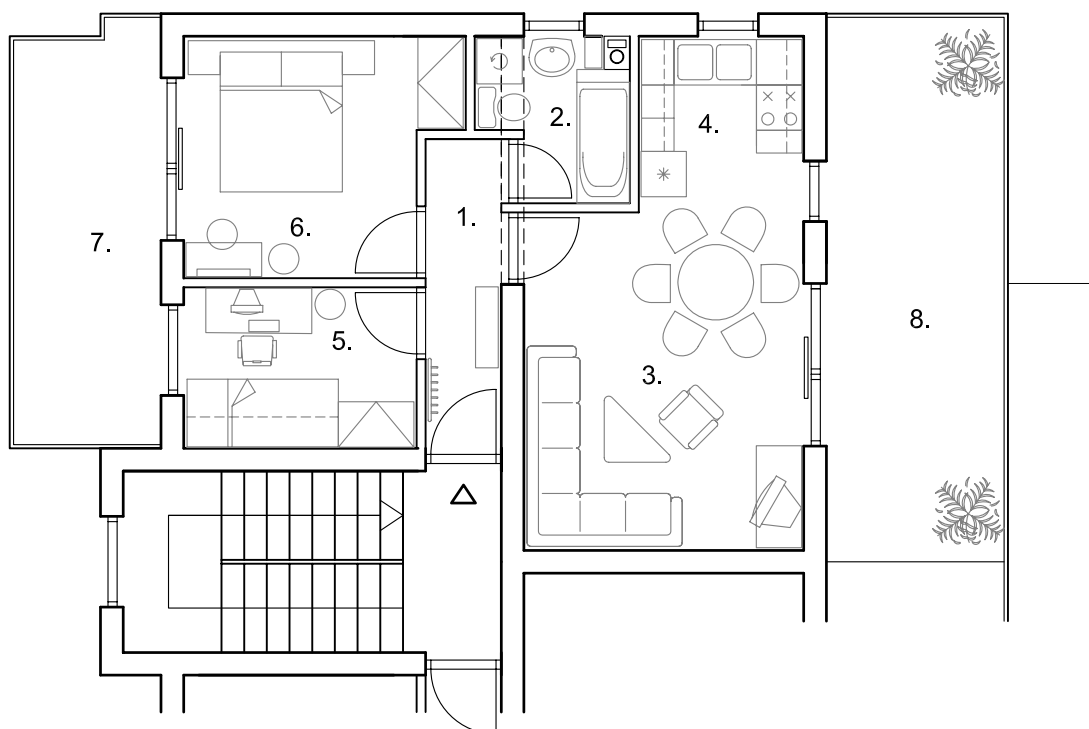
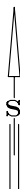
STAMBENO POSLOVNA ZGRADA  
 SP 1 Ul. Dr.Luje Naletelića - BOTINEC

DVOIPOSOBNI STAN 75,24 m<sup>2</sup>



POTKROVLJE  
 STAN 3

S 3



STAN 3

koeficijent

1. HODNIK	parket	4,48 m <sup>2</sup>	
2. KUPAONICA	ker. pločice	3,81 m <sup>2</sup>	
3. D. BORAVAK	parket	16,50 m <sup>2</sup>	
4. KUHINJA	ker. pločice	5,10 m <sup>2</sup>	
5. SOBA	parket	6,34 m <sup>2</sup>	
6. SOBA	parket	10,47 m <sup>2</sup>	
		46,70 m <sup>2</sup>	1,0
7. BALKON	ker. pločice	11,14 m <sup>2</sup>	0,5
8. TERASA	ker. pločice	17,40 m <sup>2</sup>	0,25
STAN 3	netto	75,24 m <sup>2</sup>	