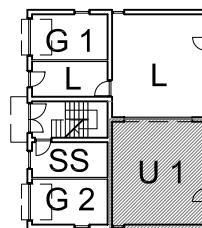
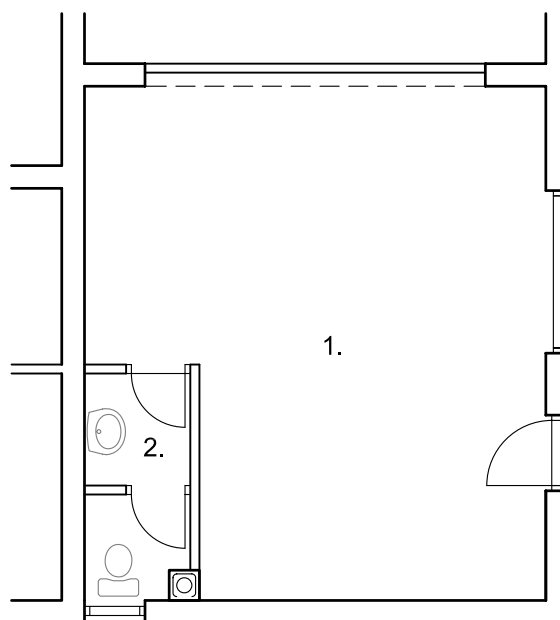
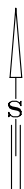


STAMBENO POSLOVNA ZGRADA
 SP 2 Ul. Dr.Luje Naletelića - BOTINEC

UREDSKI PROSTOR 40,83 m²



PRIZEMLJE
 URED 1
 U 1



URED 1

koeficijent

1. URED	parket	36,74 m ²
2. SANITARIJE	ker.pločice	4,09 m ²

URED	netto	40,83 m ²	1,0
------	-------	----------------------	-----