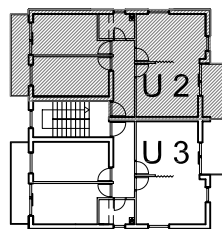
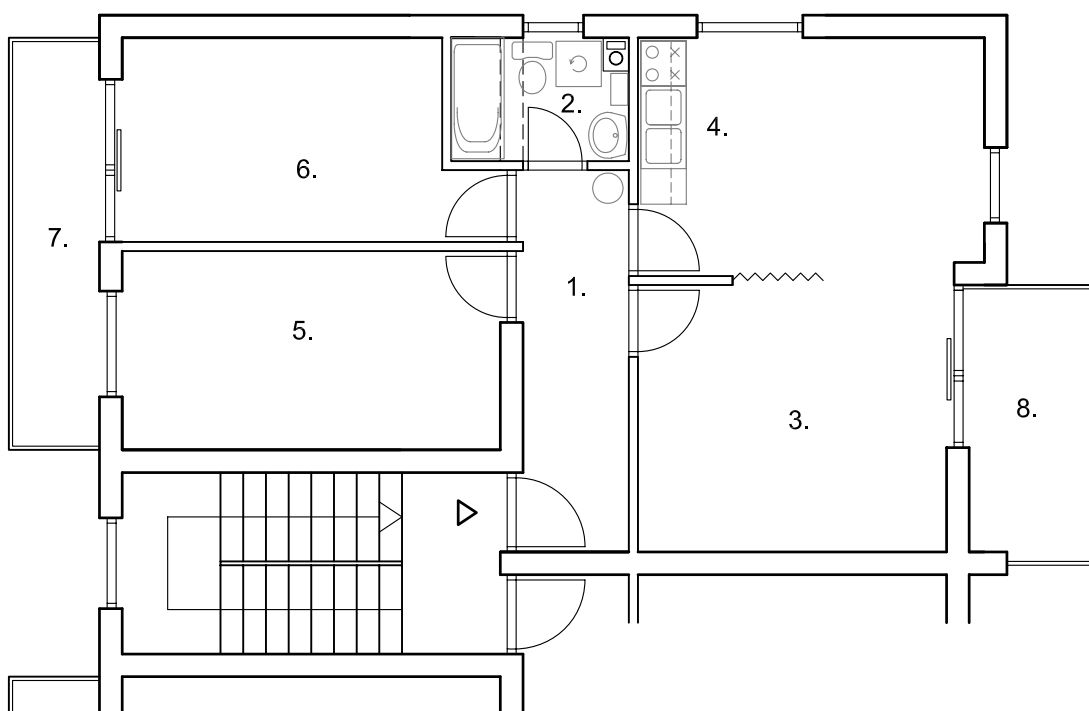
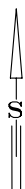


STAMBENO POSLOVNA ZGRADA  
**SP 1** Ul. Dr.Luje Naletelića - BOTINEC

UREDSKI PROSTOR 77,89 m<sup>2</sup>



PRVI KAT  
**URED 2**  
**U 2**



**URED 2**

koeficijent

1. HODNIK	parket	7,07 m <sup>2</sup>	
2. SANITARIJE	ker. pločice	3,72 m <sup>2</sup>	
3. URED	parket	25,14 m <sup>2</sup>	
4. ČAJ. KUH.	ker. pločice	3,93 m <sup>2</sup>	
5. URED	parket	13,15 m <sup>2</sup>	
6. URED	parket	12,15 m <sup>2</sup>	
		65,16 m <sup>2</sup>	1,0
7. BALKON	ker. pločice	6,55 m <sup>2</sup>	0,5
8. BALKON	ker. pločice	6,18 m <sup>2</sup>	0,5
<b>URED 2</b>		<b>netto</b>	<b>77,89 m<sup>2</sup></b>